

## Important Notice for Mac Users

This document is important notices for Mac users. Please see the notes before using StarBoard and StarBoard Software on Mac.

1. Notices for StarBoard Link EZ Setup Wizard
2. Notice for StarBoard FX-TRIO/FX-DUO/PX-DUO and StarBoard Link EZ/EZ2

### 1. Notices for StarBoard Link EZ Setup Wizard

This section is for the users with the following system.

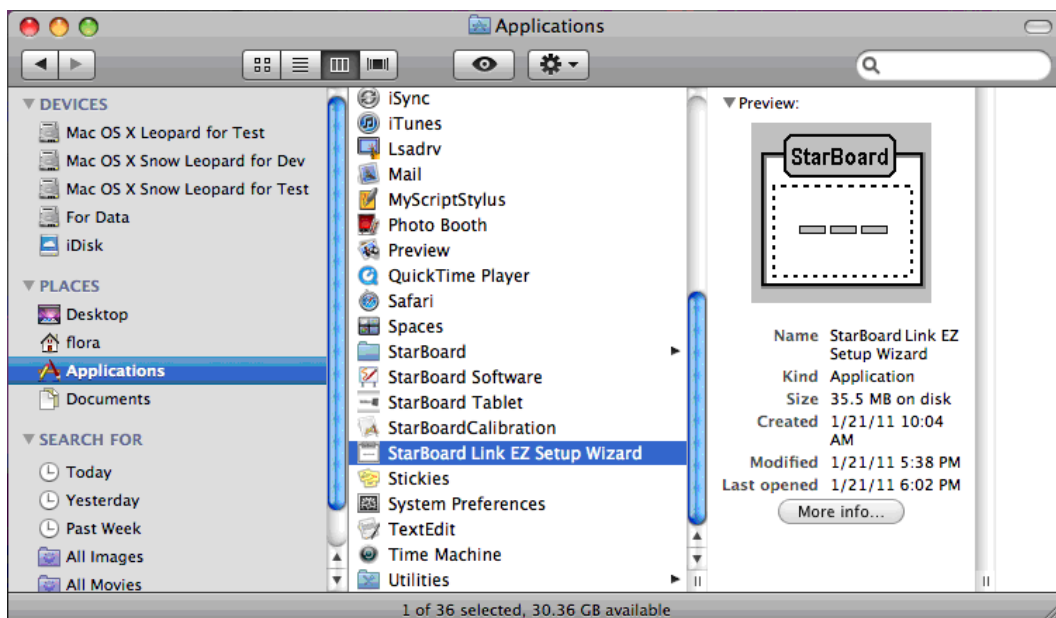
**Hardware** : StarBoard Link EZ/EZ2

**Operating System** : Mac OS 10.5, 10.6, 10.7.2

**Software** : StarBoard Link EZ Setup Wizard

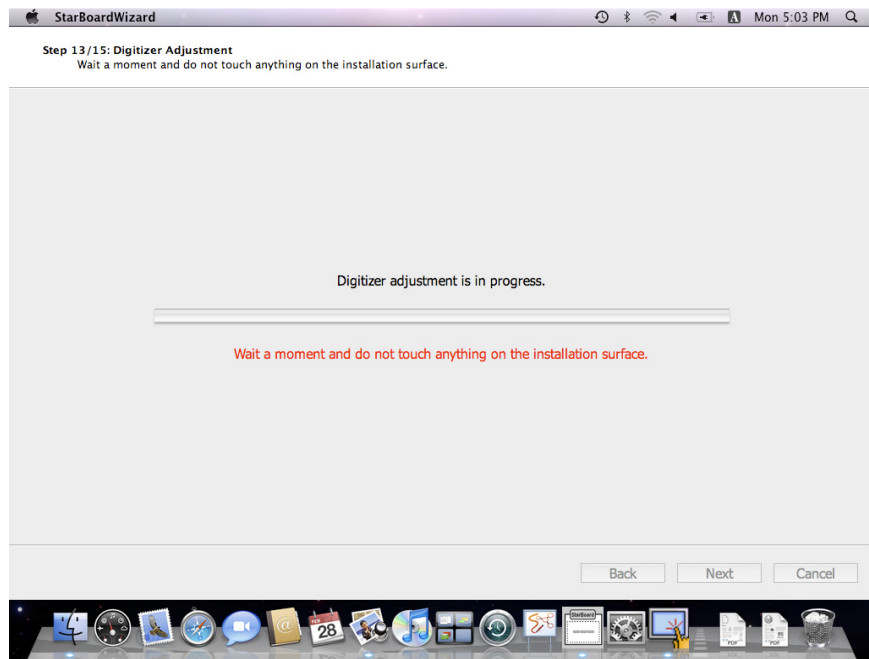
<Location of StarBoard Link EZ Setup Wizard>

Go -> Applications -> StarBoard Link EZ Setup Wizard



Please see the notes below before using StarBoard Link EZ Setup Wizard on Mac.

- Close StarBoard Software if you open before starting StarBoard Link EZ Setup Wizard.
- Not to pull off the USB cable of StarBoard Link EZ/EZ2 during Digitizer Adjustment as below. If you pull off it accidentally, Setup Wizard may become unresponded. Restart Mac and Setup Wizard from the beginning in the case.



## 2. Notice for StarBoard FX-TRIO/FX-DUO/PX-DUO and StarBoard Link EZ/EZ2

This section is for the users with the following system.

**Hardware** : StarBoard FX-TRIO/FX-DUO/PX-DUO and StarBoard Link EZ/EZ2

**Operating System** : Mac OS 10.6, 10.7.2

- The following error may occur while using StarBoard. If the error message appears, restart Mac even if it accepts your operation, and then start your task again.



=End=